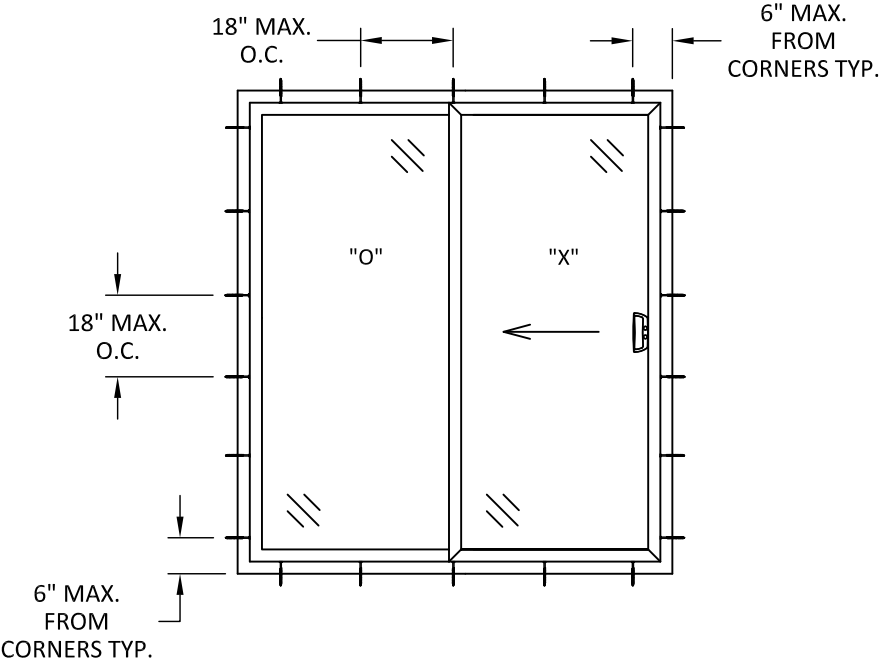


ELEVATION
SLIDING GLASS DOOR
INTERIOR VIEW



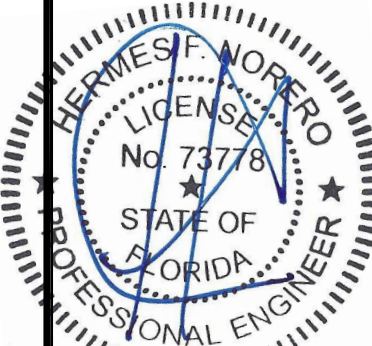
ANCHOR LAYOUT
THROUGH FRAME

AMERICAN CRAFTSMAN
WINDOWS
SILVER LINE WINDOWS AND
DOORS

ONE SILVERLINE DRIVE
NORTH BRUNSWICK, NJ 08902
PH: (888) 741-0354

TITLE: V1 SERIES/50 SERIES GLIDING PD HVHZ (NON-IMPACT) ELEVATION & ANCHOR LAYOUT						
REVISION DESCRIPTION		BY	DATE			
7TH EDITION 2020 FBC		LMH	12.04.20			
NO.	A					

DATE: 03.09.16	DWN BY: LMS	CHK BY: HFN	SCALE: NTS
-------------------	----------------	----------------	---------------



HERMES F. NORERO
FLORIDA P. E. NO. 73778
398 E. DANIA BEACH BLVD., STE. 338
DANIA BEACH, FL 33004
FBPE CERT. OF AUTHORIZATION NO. 29578

BUILDING DROPS, INC.
398 E. DANIA BEACH BLVD., #338
DANIA BEACH, FL 33004
PH:{954}399-8478 FX:{954}744-4738

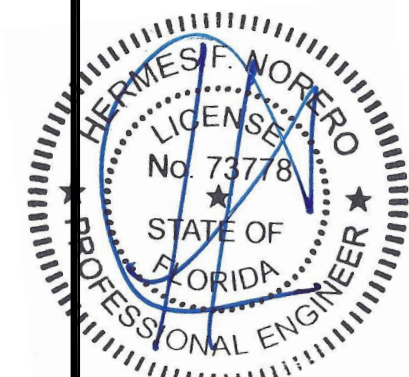
FL#: **20101**

DWG #: **SWD003**


SHEET: **2 OF 5**

ONE SILVERLINE DRIVE
NORTH BRUNSWICK, NJ 08902
PH: (888) 741-0354

TITLE: V1 SERIES/50 SERIES GLIDING PD HVHZ (NON-IMPACT)				
VERTICAL SECTIONS				
DATE: 03.09.16	NO.	REVISION DESCRIPTION	BY	DATE
DWN BY: LMS	A	7TH EDITION 2020 FBC	LMH	12.04.20
CHK BY: HFN				
SCALE: NTS				



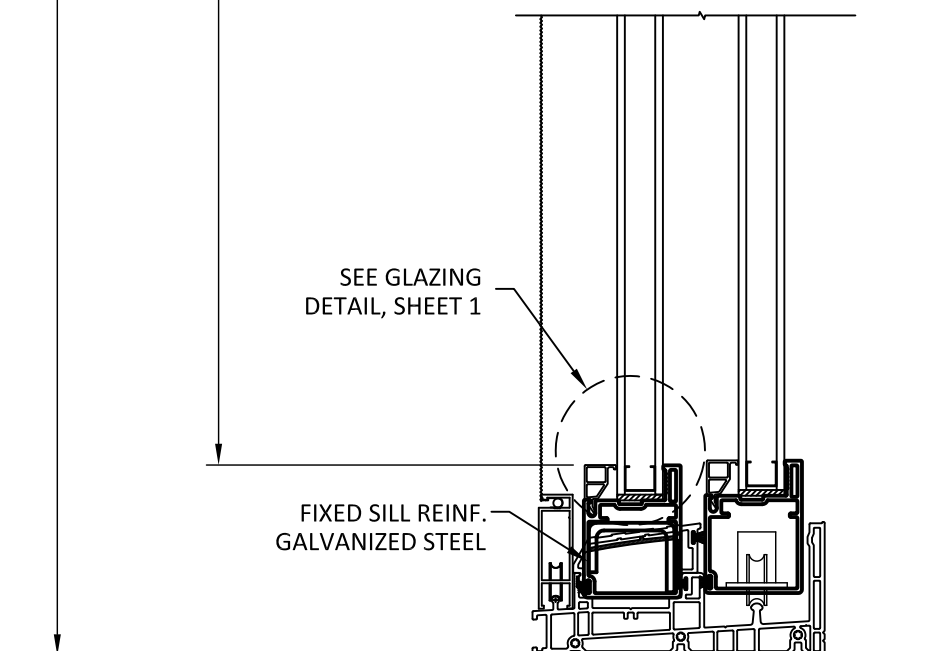
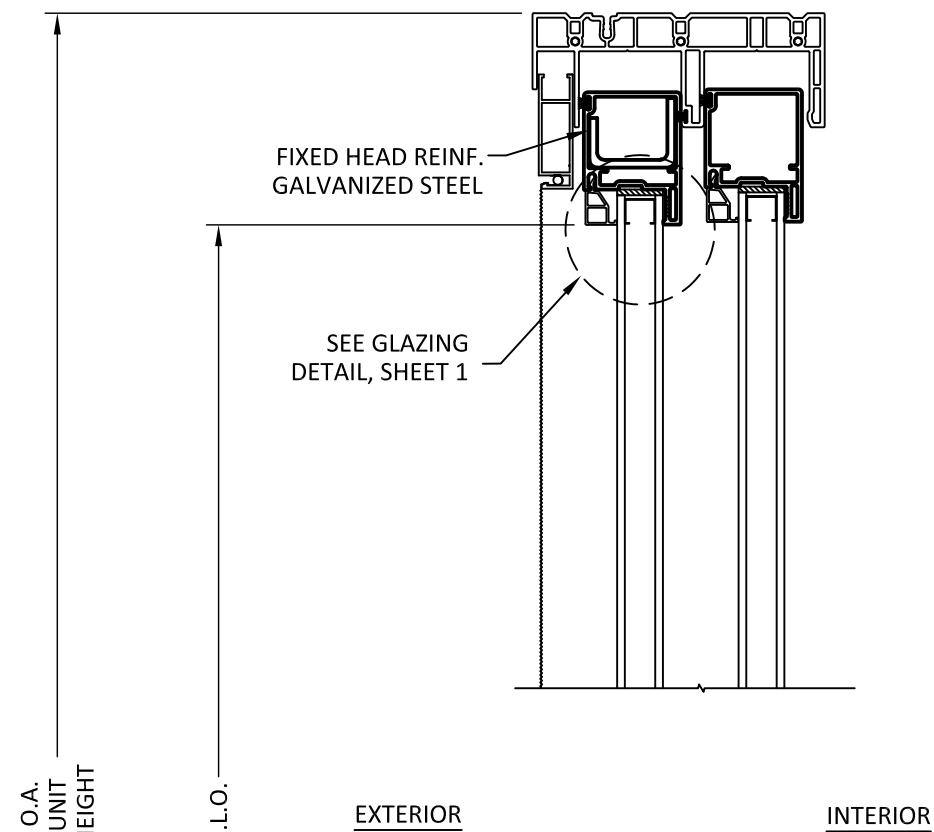
HERMES F. NORERO
FLORIDA P. E. NO. 73778
398 E. DANIA BEACH BLVD., STE. 338
DANIA BEACH, FL 33004
FBPE CERT. OF AUTHORIZATION NO. 29578

 BUILDING DROPS, INC.
398 E. DANIA BEACH BLVD., #338
DANIA BEACH, FL 33004
PH:(954)399-8478 FX:(954)744-4738

FL#: 20101

DWG #:
SWD003

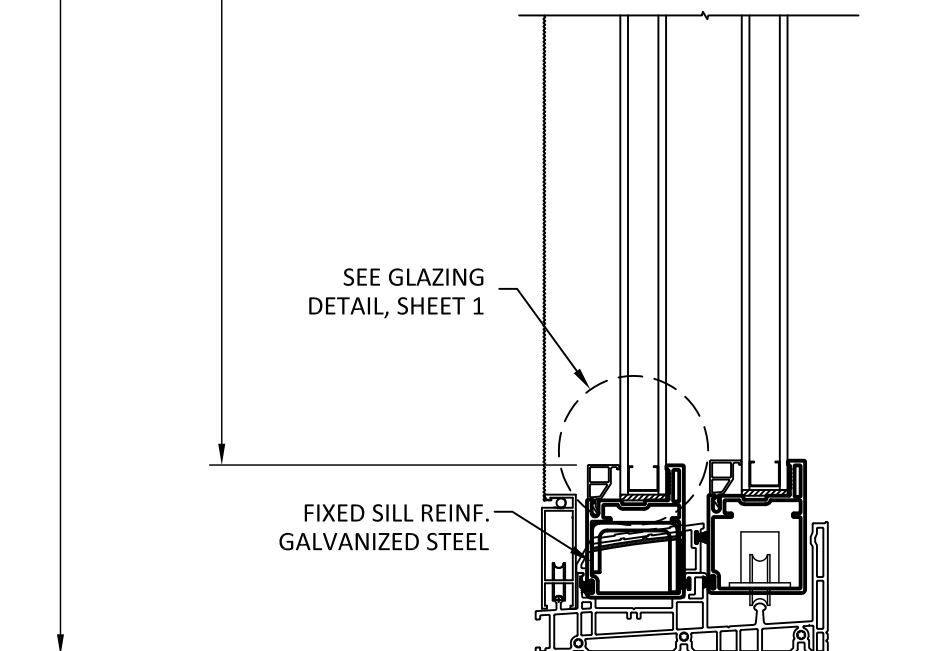
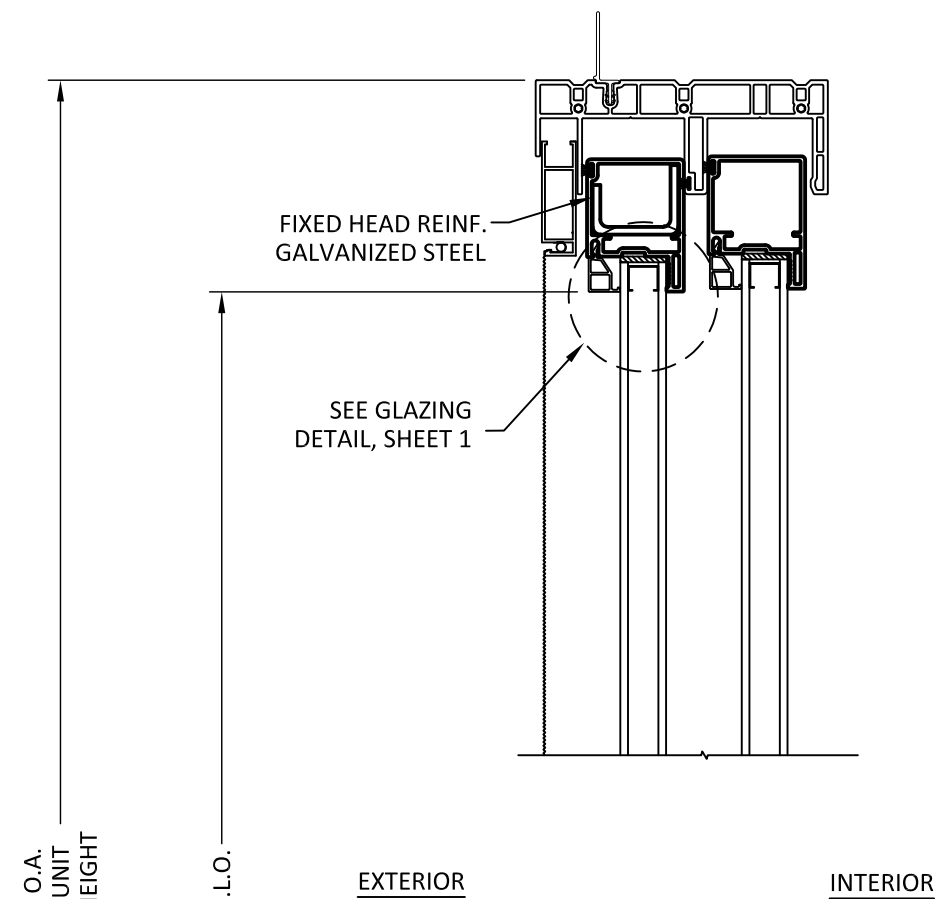
SHEET: 3 OF 5



A
3

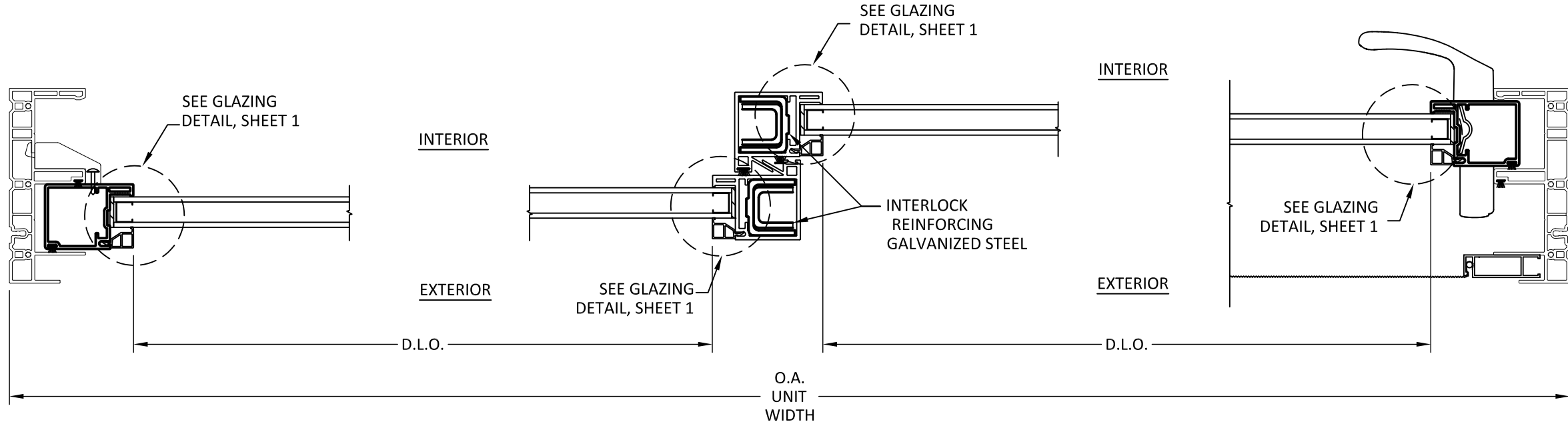
VERTICAL SECTION

NO FLANGE



B
3

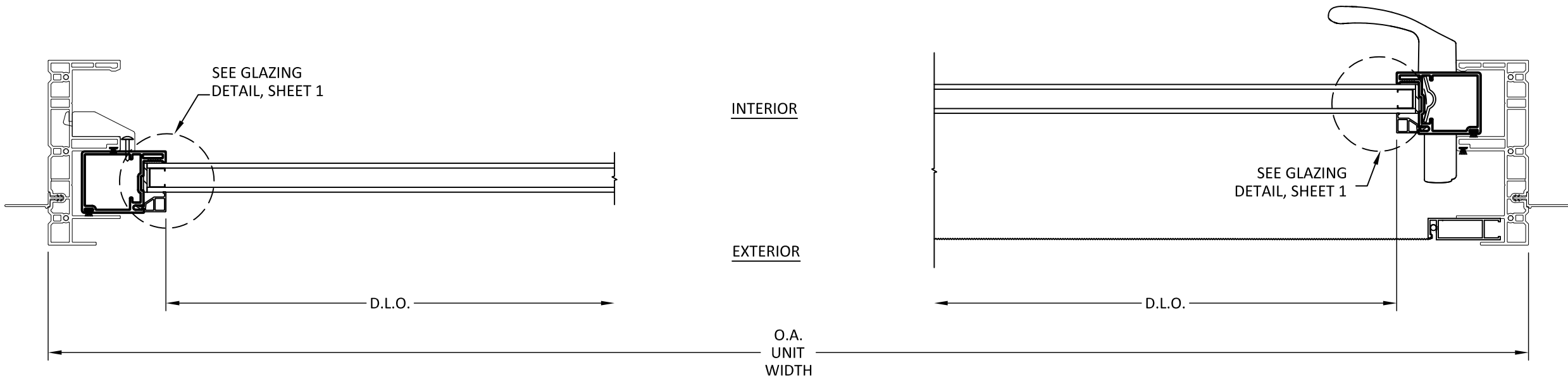
VERTICAL SECTION
WITH OPTIONAL ACCESSORY FLANGE



A
4 **HORIZONTAL SECTION**
NO FLANGE

B
4 **HORIZONTAL SECTION**

C
4 **HORIZONTAL SECTION**
NO FLANGE

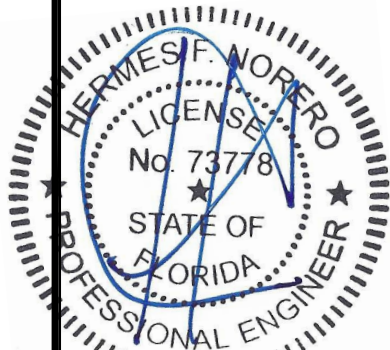


D
4 **HORIZONTAL SECTION**
WITH OPTIONAL ACCESSORY FLANGE

E
4 **HORIZONTAL SECTION**
WITH OPTIONAL ACCESSORY FLANGE

TITLE: V1 SERIES/50 SERIES GLIDING PD HVHZ (NON-IMPACT) HORIZONTAL SECTIONS	DATE	BY	DATE
	03.09.16	LMH	12.04.20
	DWN BY:		
	LMS		
NO.	REVISION DESCRIPTION		
	7TH EDITION 2020 FBC		
A			

DATE:	DWN BY:	CHK BY:	SCALE:
03.09.16	LMS	HFN	NTS



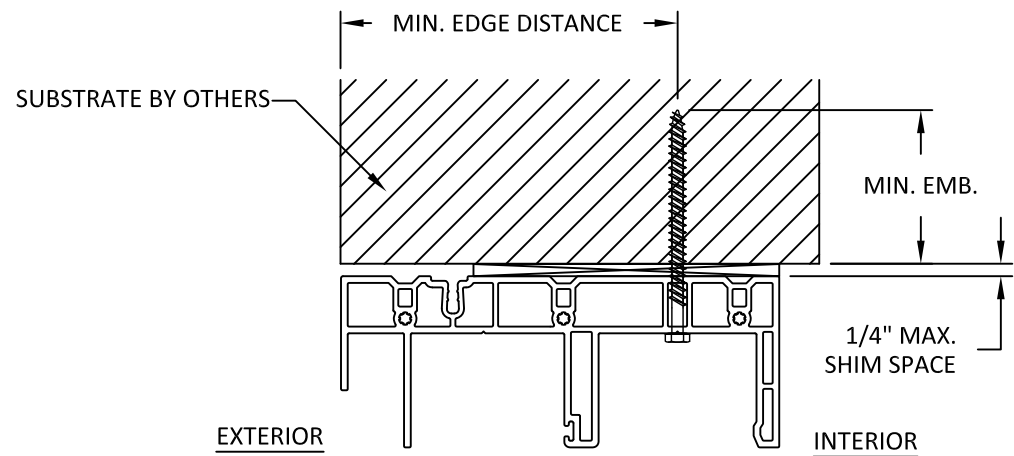
HERMES F. NORERO
FLORIDA P. E. NO. 73778
398 E. DANIA BEACH BLVD., STE. 338
DANIA BEACH, FL 33004
FBPE CERT. OF AUTHORIZATION NO. 29578

BUILDING DROPS, INC.
398 E. DANIA BEACH BLVD., #338
DANIA BEACH, FL 33004
PH:(954)399-8478 FX:(954)744-4738

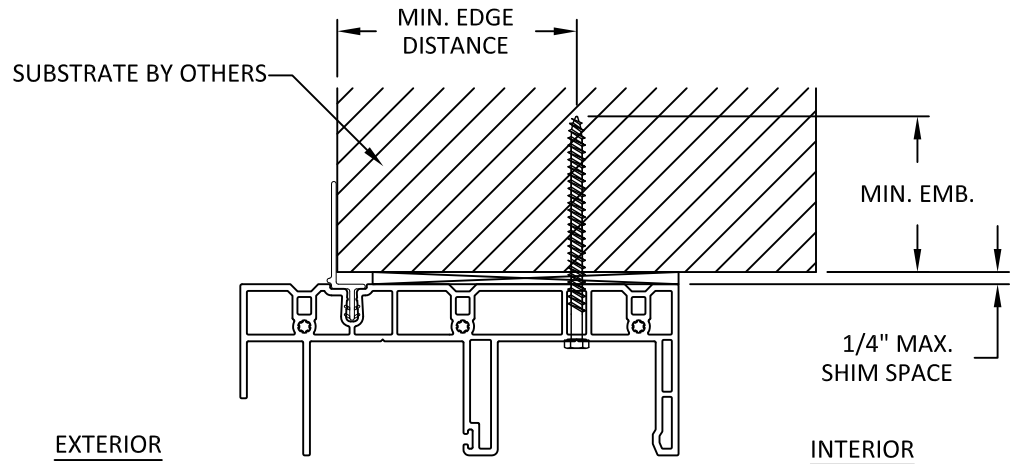
FL#: 20101

DWG #: SWD003

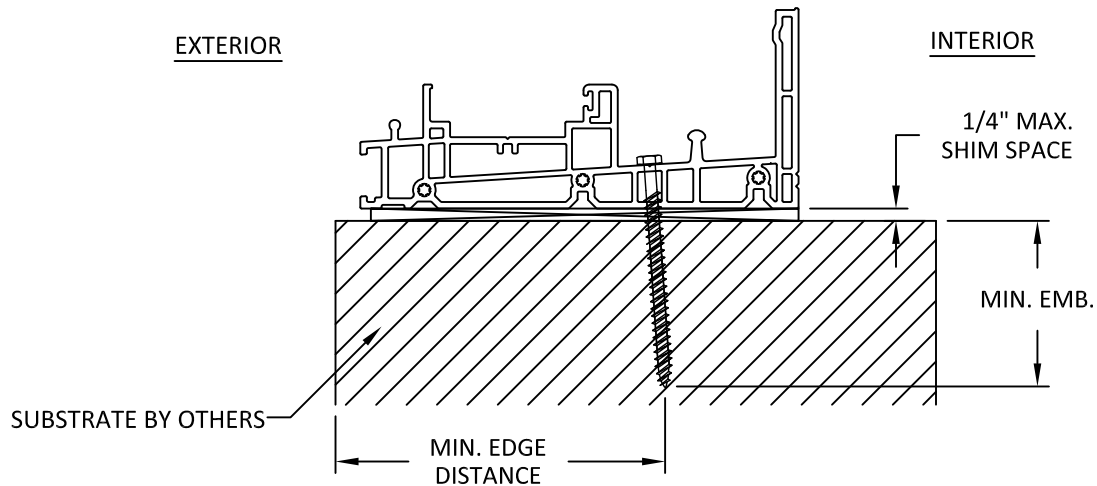
SHEET: 4 OF 5



A
5 **ANCHOR DETAIL**
THROUGH FRAME WITHOUT FLANGE (HEAD)



B
5 **ANCHOR DETAIL**
THROUGH FRAME WITH FLANGE (HEAD)



C
5 **ANCHOR DETAIL**
THROUGH FRAME (SILL)

INSTALLATION NOTES:

- ONE (1) INSTALLATION ANCHOR IS REQUIRED AT EACH ANCHOR LOCATION SHOWN ON SHEET 2.
- THE NUMBER OF INSTALLATION ANCHORS DEPICTED IS THE MINIMUM NUMBER OF ANCHORS TO BE USED FOR PRODUCT INSTALLATION OF THE MAXIMUM SIZE LISTED.
- INSTALL INDIVIDUAL INSTALLATION ANCHORS WITHIN A TOLERANCE OF $\pm 1/2$ INCH THE DEPICTED LOCATION & SPACING IN THE ANCHOR LAYOUT DETAILS (I.E., WITHOUT CONSIDERATION OF TOLERANCES). TOLERANCES ARE NOT CUMULATIVE FROM ONE INSTALLATION ANCHOR TO THE NEXT.
- SHIM AS REQUIRED AT EACH INSTALLATION ANCHOR WITH LOAD BEARING SHIM(S). MAXIMUM ALLOWABLE SHIM STACK TO BE 1/4 INCH. SHIM WHERE SPACE OF 1/16 INCH OR GREATER OCCURS. SHIM(S) SHALL BE CONSTRUCTED OF HIGH DENSITY PLASTIC OR BETTER.
- FOR MASONRY OR CONCRETE OPENINGS, 1X WOOD BUCK MAY BE USED (OPTIONAL) AS LONG AS THE MINIMUM EMBEDMENT AND EDGE DISTANCE REQUIREMENTS ARE STILL MET WITHIN THE CORRESPONDING HOST SUBSTRATE. SEE GENERAL NOTE #3 ON SHEET 1 FOR MORE INFORMATION.
- MINIMUM EMBEDMENT AND EDGE DISTANCE EXCLUDE WALL FINISHES, INCLUDING BUT NOT LIMITED TO STUCCO, FOAM, BRICK VENEER, AND SIDING.
- INSTALLATION ANCHORS AND ASSOCIATED HARDWARE MUST BE MADE OF CORROSION RESISTANT MATERIAL OR HAVE A CORROSION RESISTANT COATING.
- FOR HOLLOW BLOCK AND GROUT FILLED BLOCK, DO NOT INSTALL INSTALLATION ANCHORS INTO MORTAR JOINTS. EDGE DISTANCE IS MEASURED FROM FREE EDGE OF BLOCK OR EDGE OF MORTAR JOINT INTO FACE SHELL OF BLOCK.
- INSTALLATION ANCHORS SHALL BE INSTALLED IN ACCORDANCE WITH ANCHOR MANUFACTURER'S INSTALLATION INSTRUCTIONS, AND ANCHORS SHALL NOT BE USED IN SUBSTRATES WITH STRENGTHS LESS THAN THE MINIMUM STRENGTH SPECIFIED BY THE ANCHOR MANUFACTURER.
- SILL SHALL BE SET IN A BED OF SILICONE.

NOTE:
JAMBS HAVE
SIMILAR DETAILS

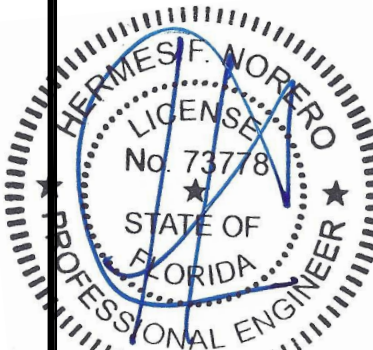
ANCHOR SCHEDULE				
METHOD	SUBSTRATE	ANCHOR SCHEDULE	MIN EMBEDMENT	MIN. EDGE DISTANCE
THROUGH FRAME	WOOD: MIN. SG = 0.55	#10 WOOD SCREW	1.5"	0.75"
	METAL: 18 GAUGE Steel, MIN. Fy = 33KSI	#14 TEK SCREW	3 THREADS MIN PENETRATION BEYOND METAL	0.75"
	CONCRETE: f'c=3000PSI	1/4" ITW TAPCON	1.75"	2.5"
	MASONRY: CMU per ASTM C90 MIN. 2000 PSI	1/4" ITW TAPCON	1.75"	2.5"

AMERICAN CRAFTSMAN
WINDOWS
SILVER LINE WINDOWS AND
DOORS

ONE SILVERLINE DRIVE
NORTH BRUNSWICK, NJ 08902
PH: (888) 741-0354

TITLE: V1 SERIES/50 SERIES GLIDING PD HVHZ (NON-IMPACT) INSTALLATION NOTES, ANCHOR DETAILS & SCHEDULE				
REVISION DESCRIPTION		BY	DATE	
7TH EDITION 2020 FBC		LMH	12.04.20	
NO.	A			

DATE: 03.09.16	DWN BY: LMS	CHK BY: HFN	SCALE: NTS
-------------------	----------------	----------------	---------------



HERMES F. NORERO
FLORIDA P. E. NO. 73778
398 E. DANIA BEACH BLVD., STE. 338
DANIA BEACH, FL 33004
FBPE CERT. OF AUTHORIZATION NO. 29578

BUILDING DROPS, INC.
398 E. DANIA BEACH BLVD., #338
DANIA BEACH, FL 33004
PH:(954)399-8478 FX:(954)744-4738

FL#: **20101**

DWG #: **SWD003**

SHEET: **5 OF 5**